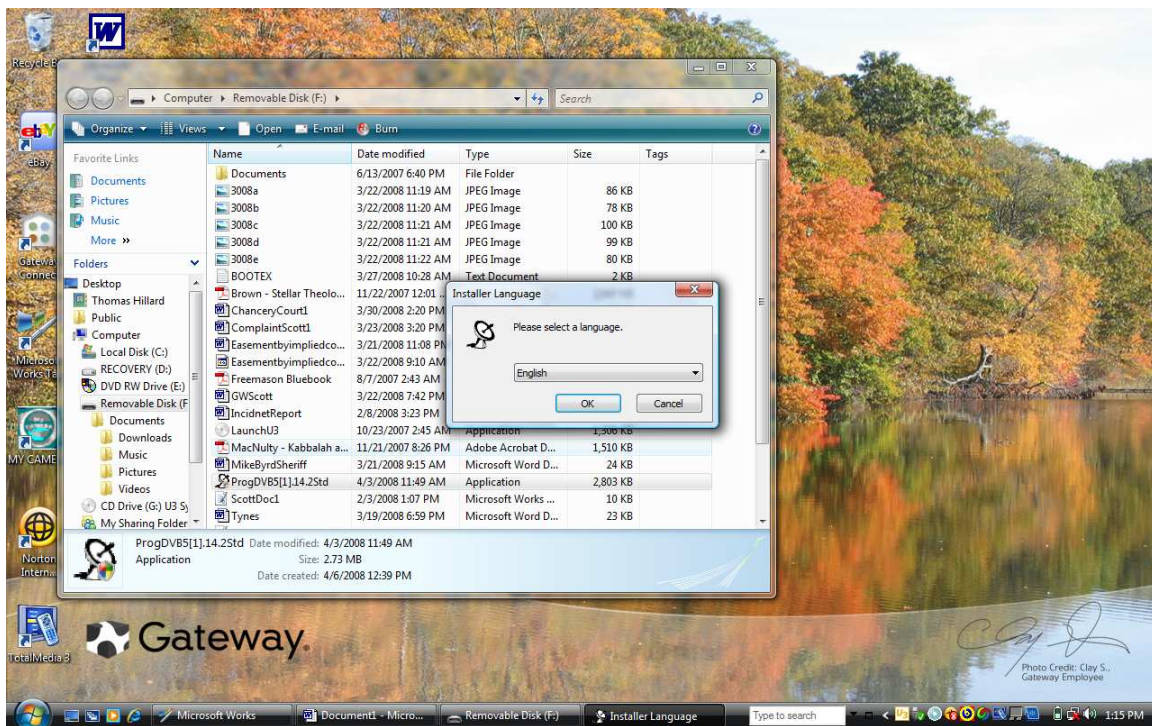


ProgDVB Quick Start

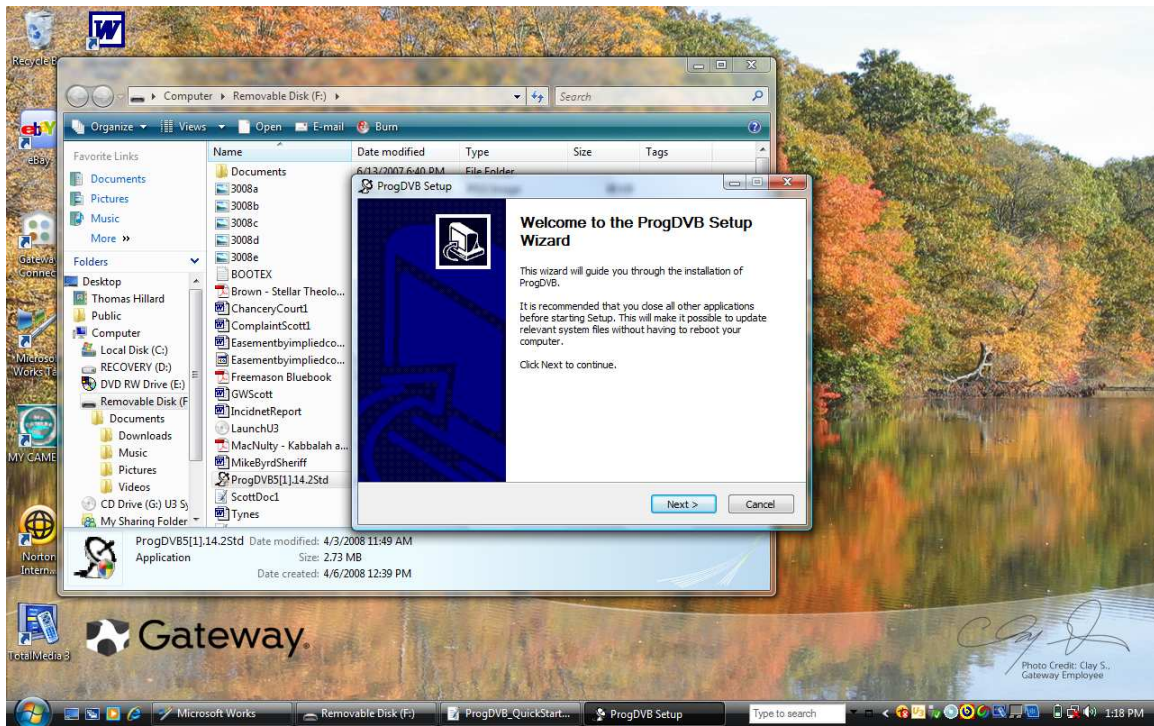
By Tom Hillard

Ver. 5.14.02

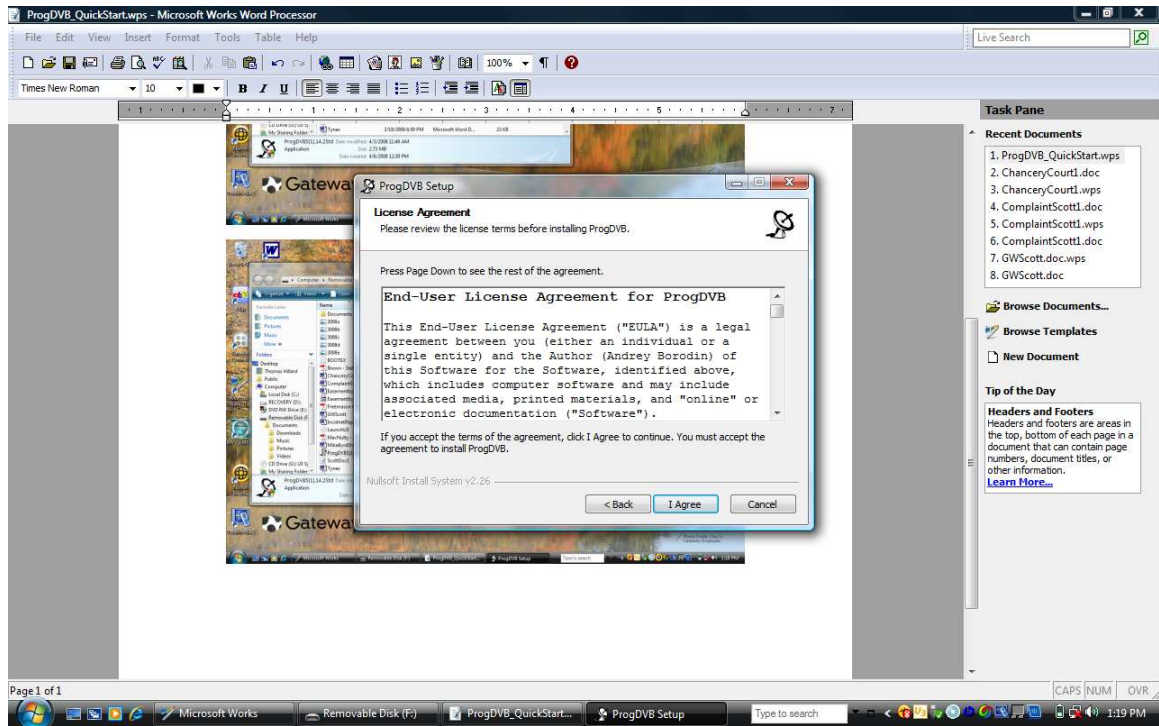
Launch the installer from the ProgDVB file you downloaded from ProgDVB.com



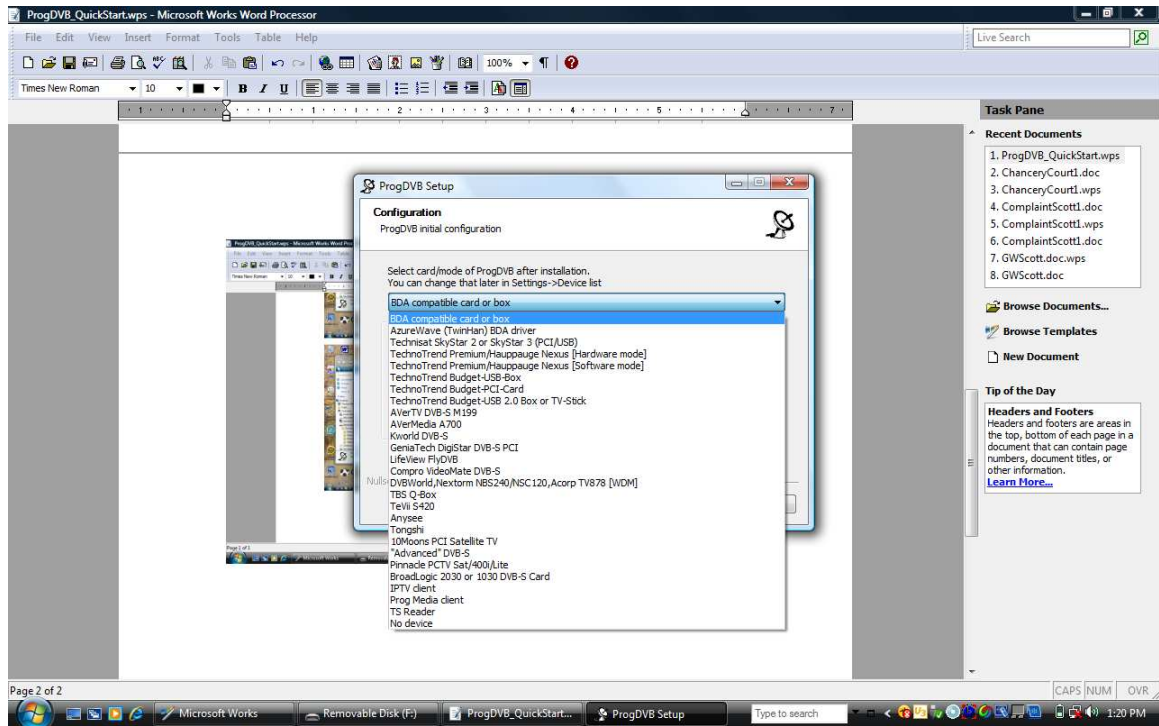
Select your language preference. Click OK.



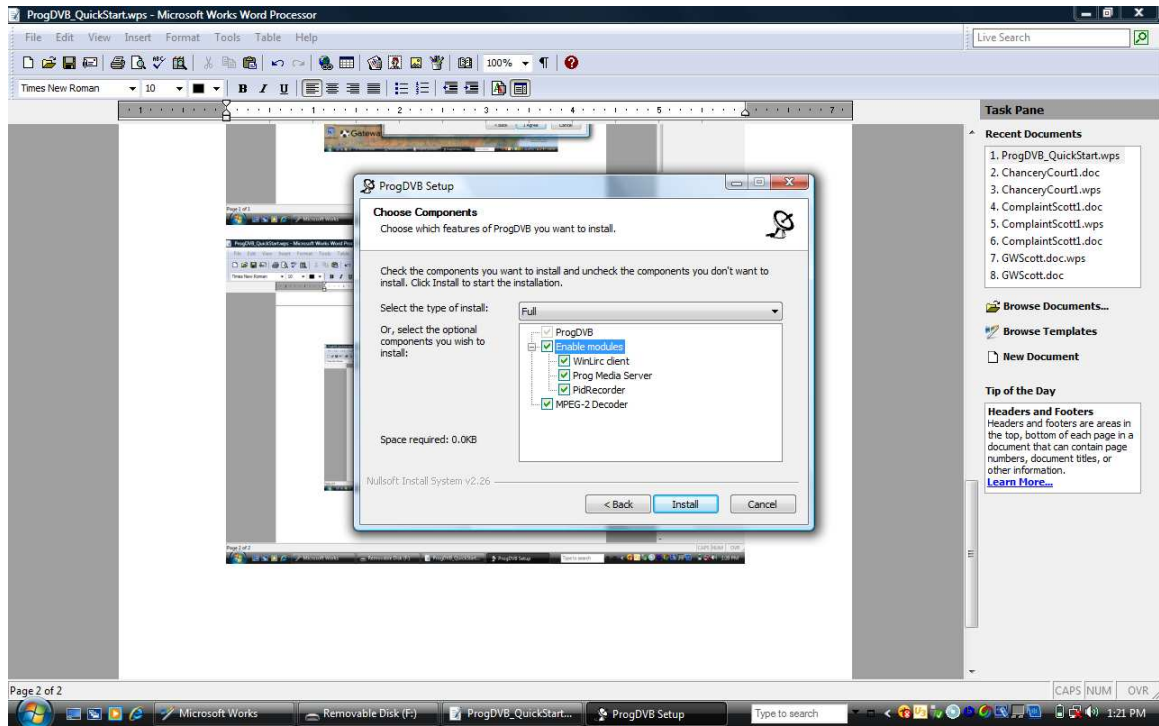
Click Next.



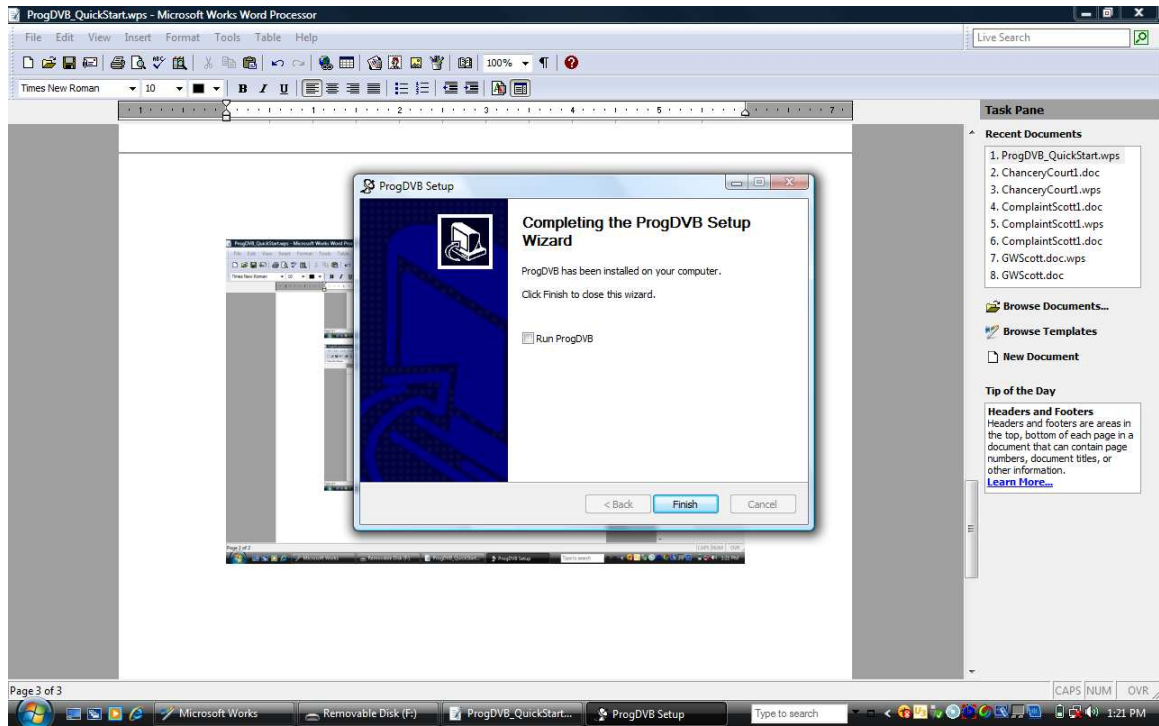
Click on I Agree.



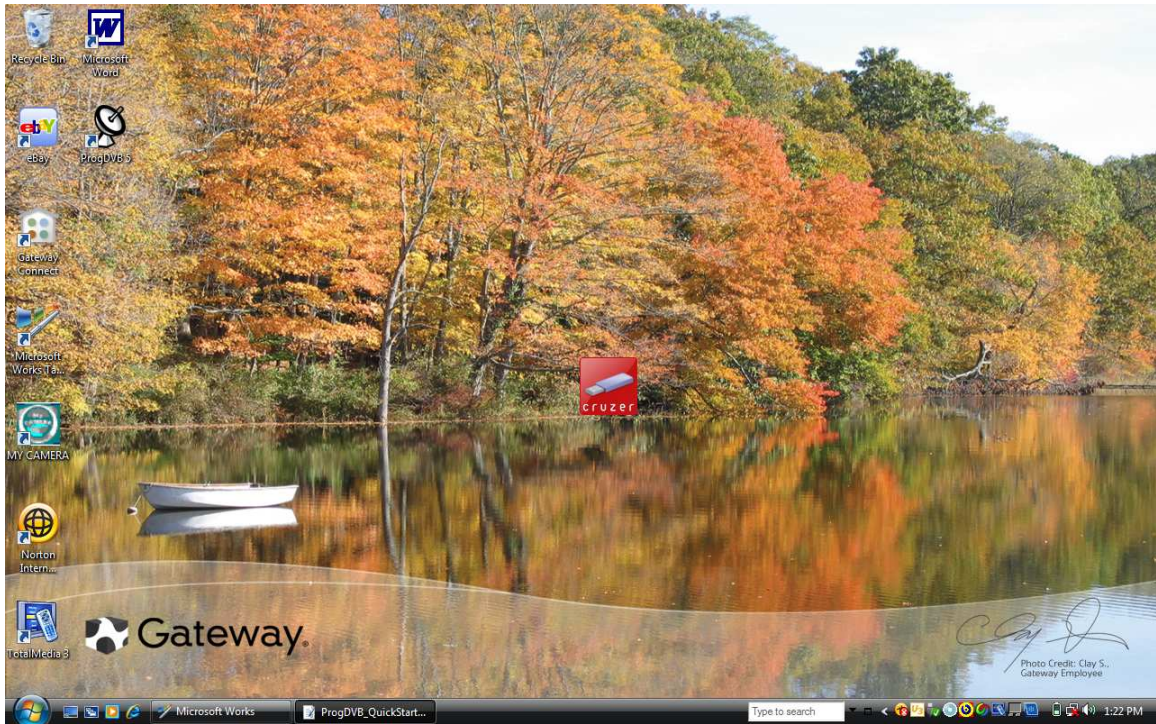
Select the DVB-S hardware you have installed.



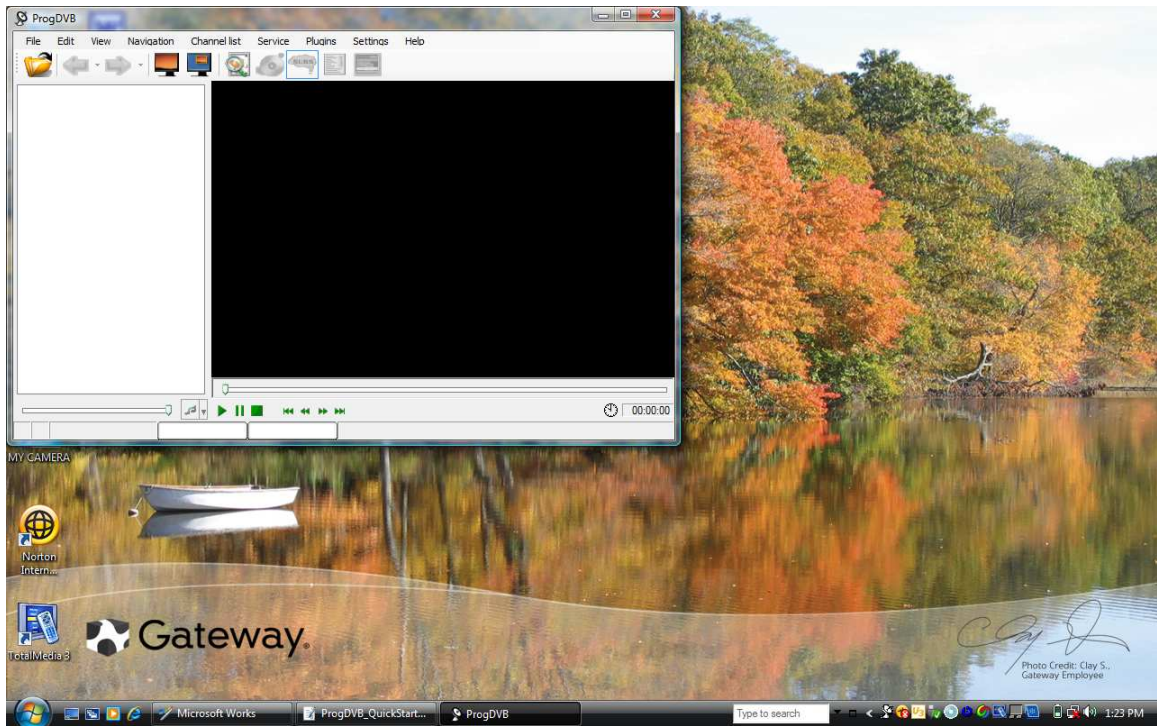
Select options you want. WinLirc allows you to use a Universal IR Remote. Do a Google search for WinLirc info. If you use a wireless keyboard, better control of program features is possible.



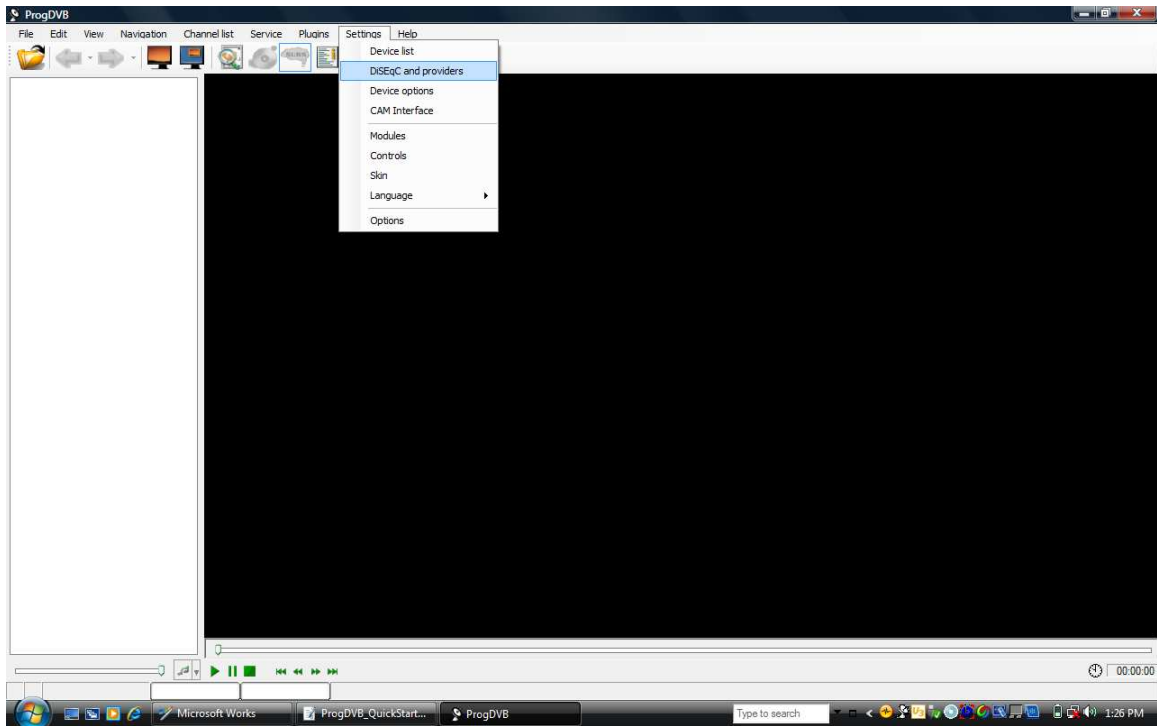
Click Finish.



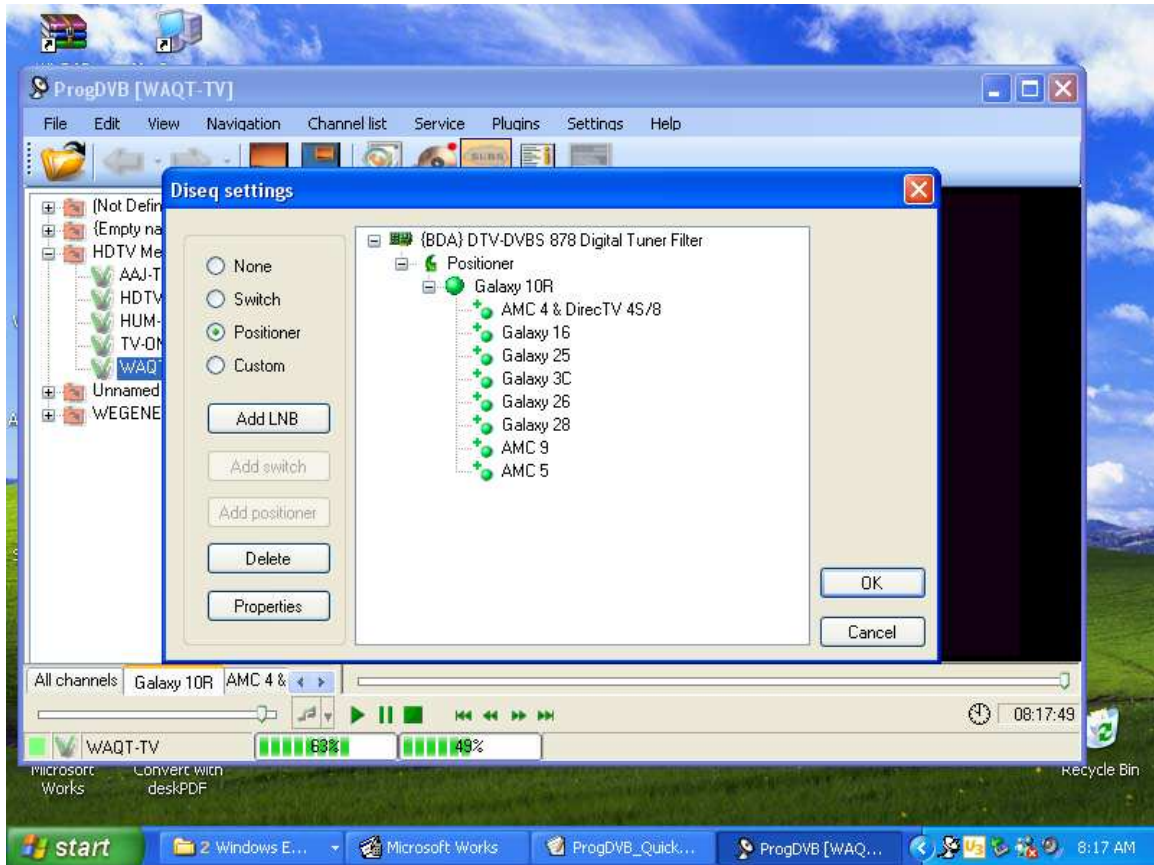
After installation the ProgDVB Icon will appear on your desktop.



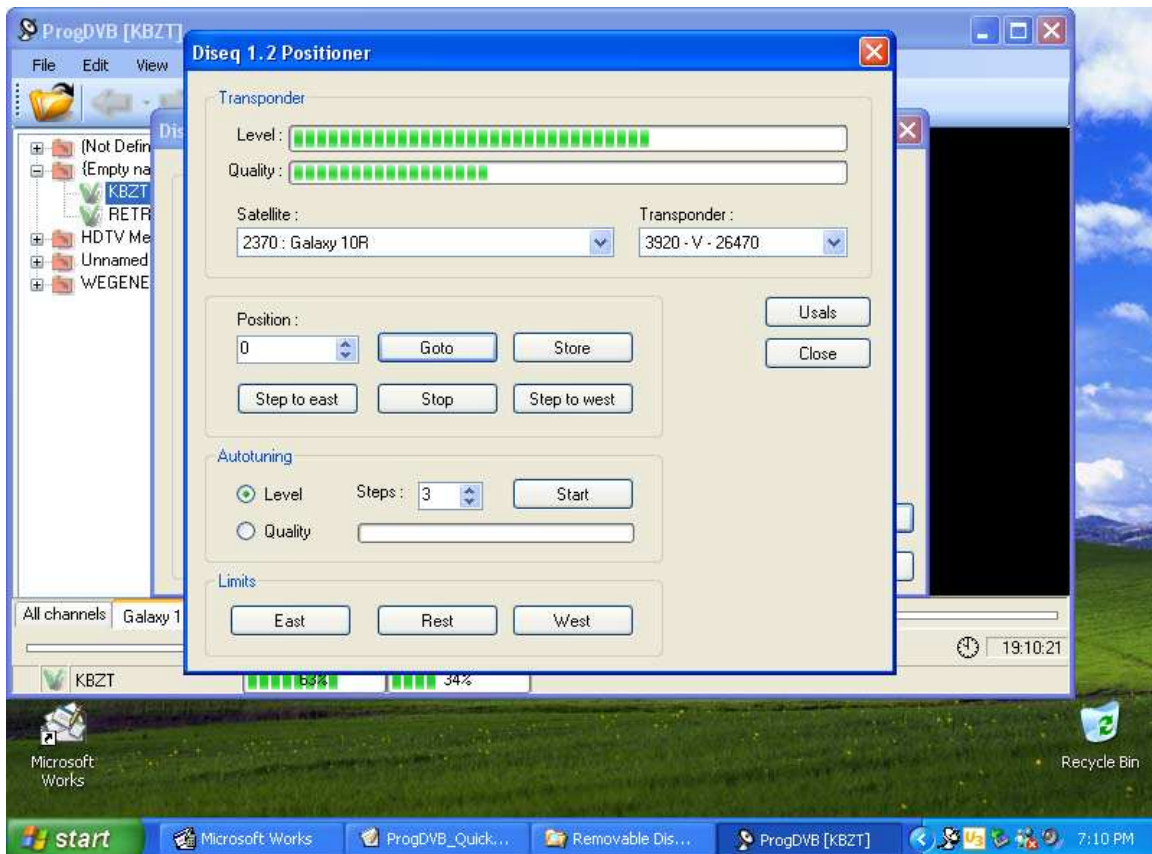
Double click the Icon to launch the program.



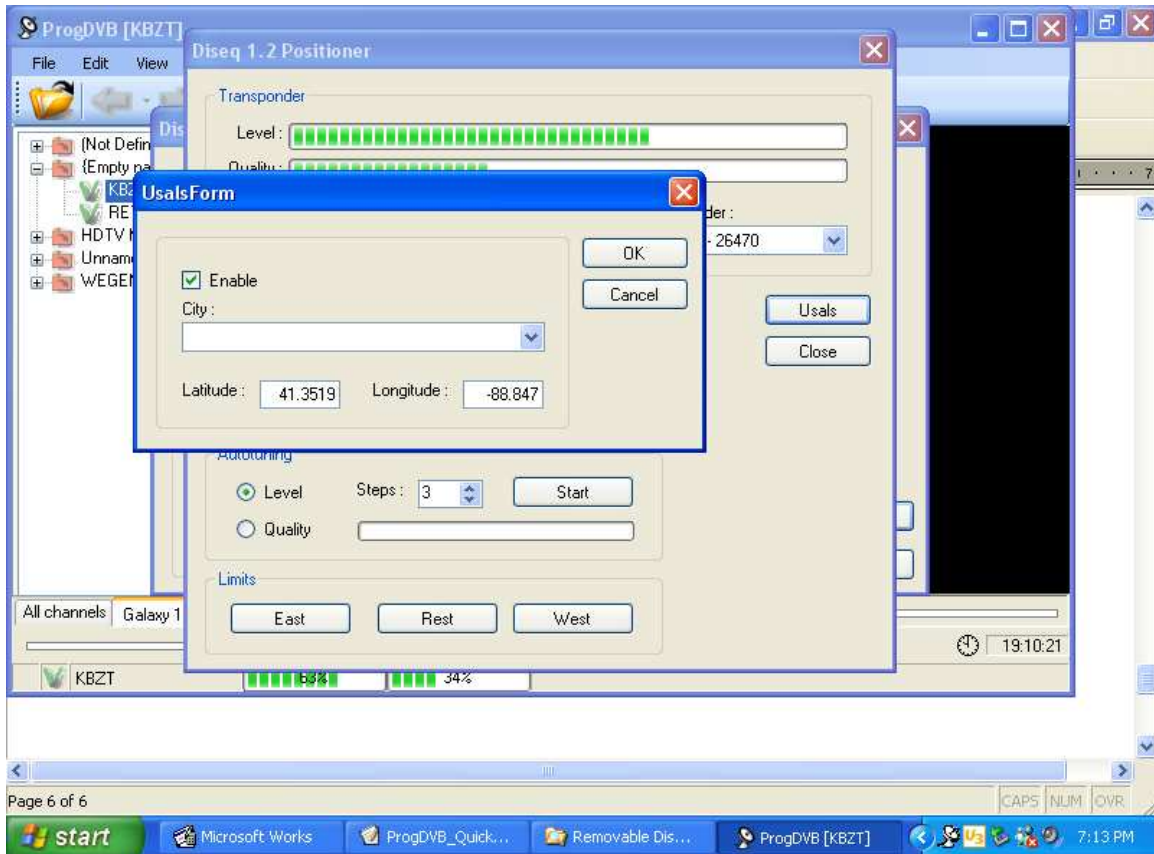
Click Settings then DiSEqC and providers.



Click on Positioner. When Positioner appears in directory tree, highlight it and click on Properties.



Click on USALS if you have a dish mover.



Enter your Lat. and Lon.. If you don't know them do a Google search on Latitude and longitude There are several good sites for this information. Some have detailed information on Free To Air Satellite and Geostationary Satellites.

Lat - Long Finder: This page helps you find Latitude and Longitude - Microsoft Internet Explorer

File Edit View Favorites Tools Help

Back Forward Stop Home Search Favorites Media Print

Address <http://www.satsig.net/maps/lat-long-finder.htm> Go Links

Google G Go 18 blocked Check AutoLink Settings

Satellite Signals

How do I find my lat and long ?
What is my latitude and longitude ?

Latitude and Longitude

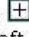
Latitude And Longitude
Looking for Latitude And Longitude?
Find exactly what you want today.
Ads by Google

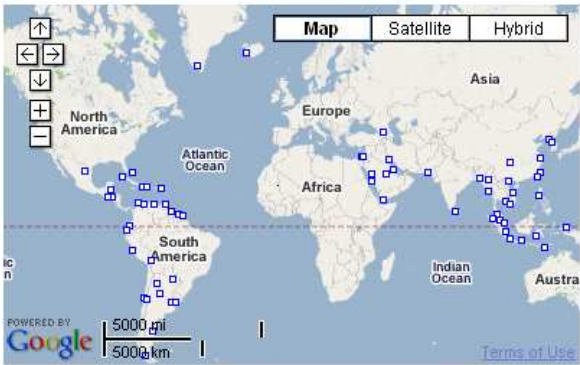
Instructions to determine your latitude and longitude:

Practice first. Put your mouse cursor near your location and **double click or just drag the map**. The map display will move so that the selected point is in the centre. The latitude and longitude of the centre of the map is then shown below the map. Or type the town, country, zip code or post code in the box below, for example: chicago 35035 paris france london CM2 bangalore adelaide lagos liverpool

Centre the map around

miami

To refine the accuracy of your site latitude and longitude, click on the plus sign  in the navigation boxes at the upper left side of the



Map Satellite Hybrid

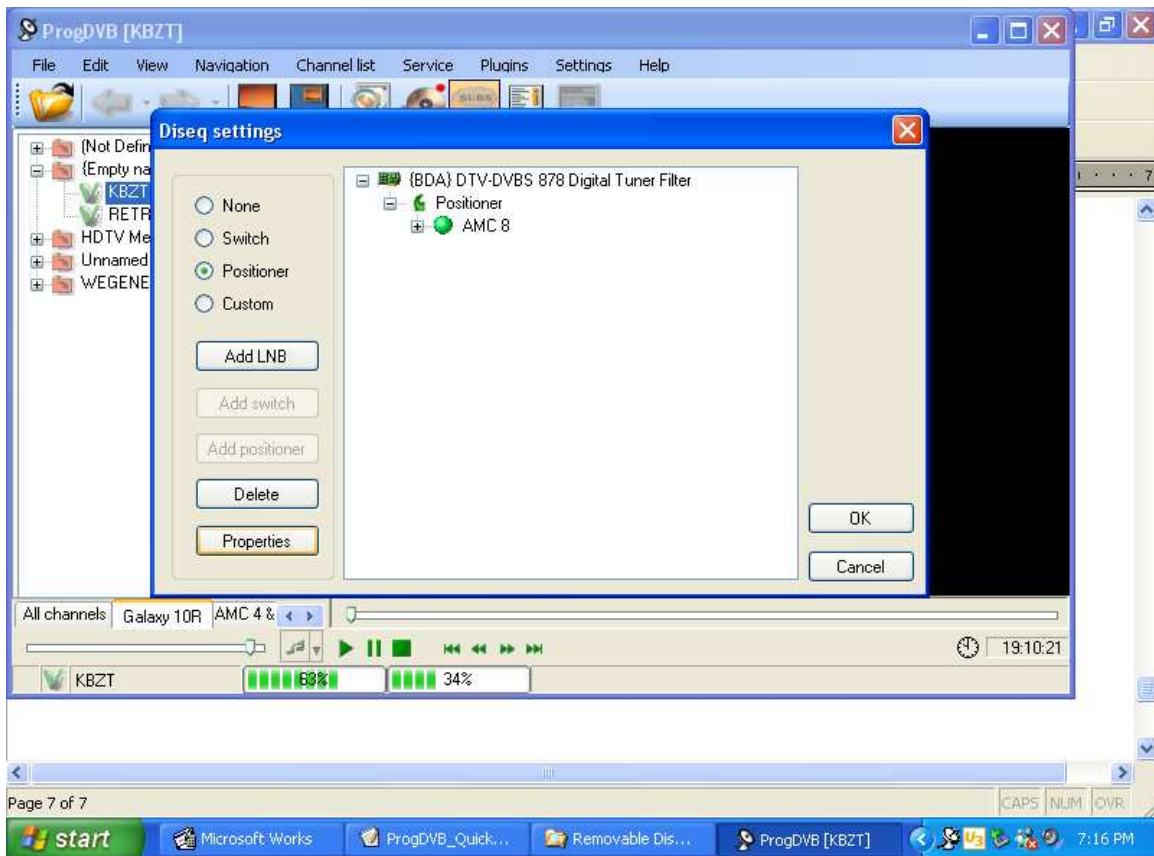
North America Europe Asia
Atlantic Ocean Africa Indian Ocean
South America Australia

POWERED BY Google

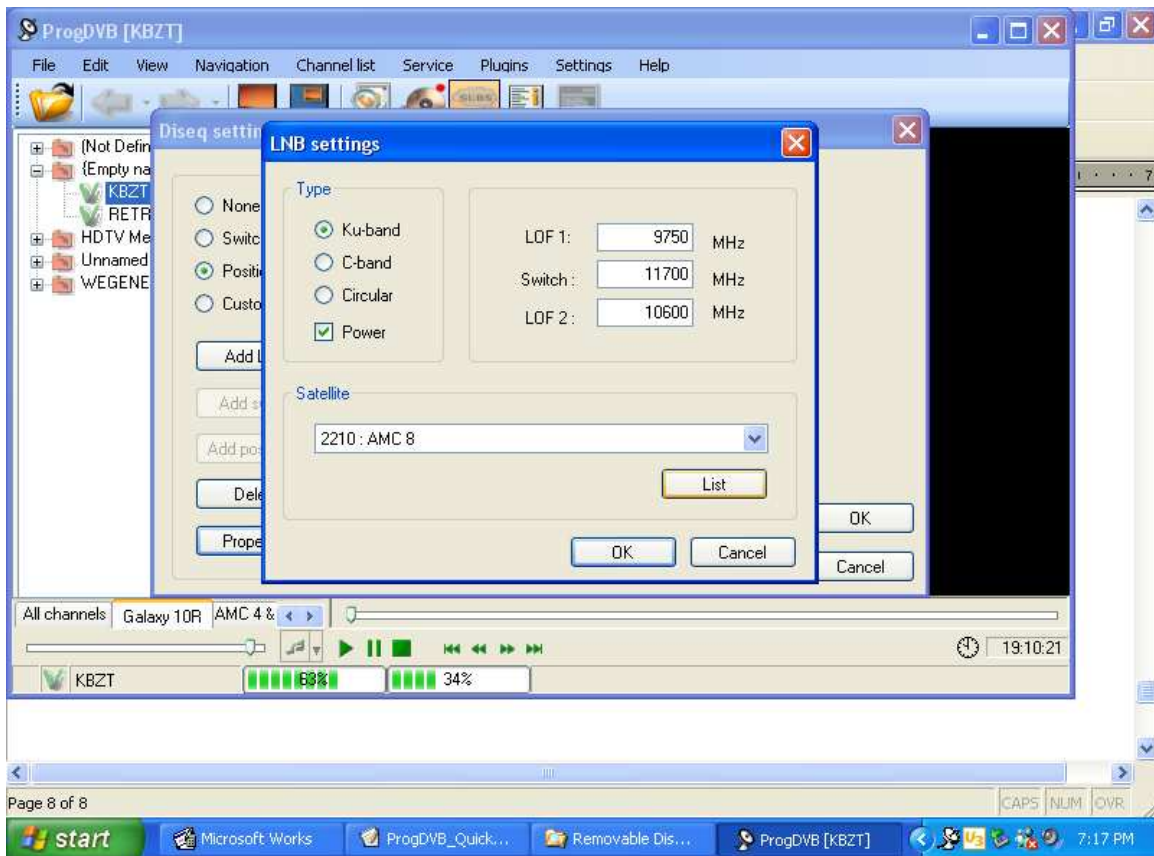
(Optional) Pointing angles to satellite orbit longitude

start 2 Windows E... Microsoft Works ProgDVB_Quick... Lat - Long Find... 8:43 AM

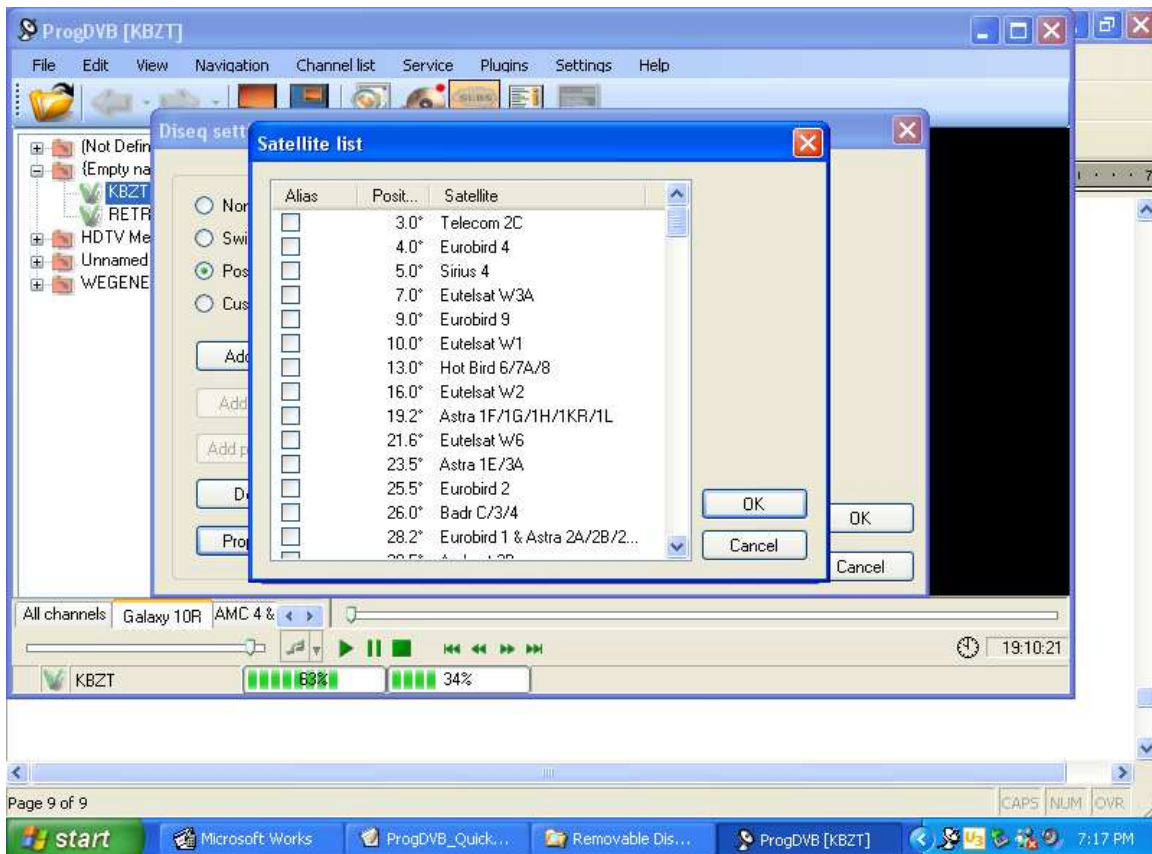
www.satsig.net has a wealth of information you will find of interest.



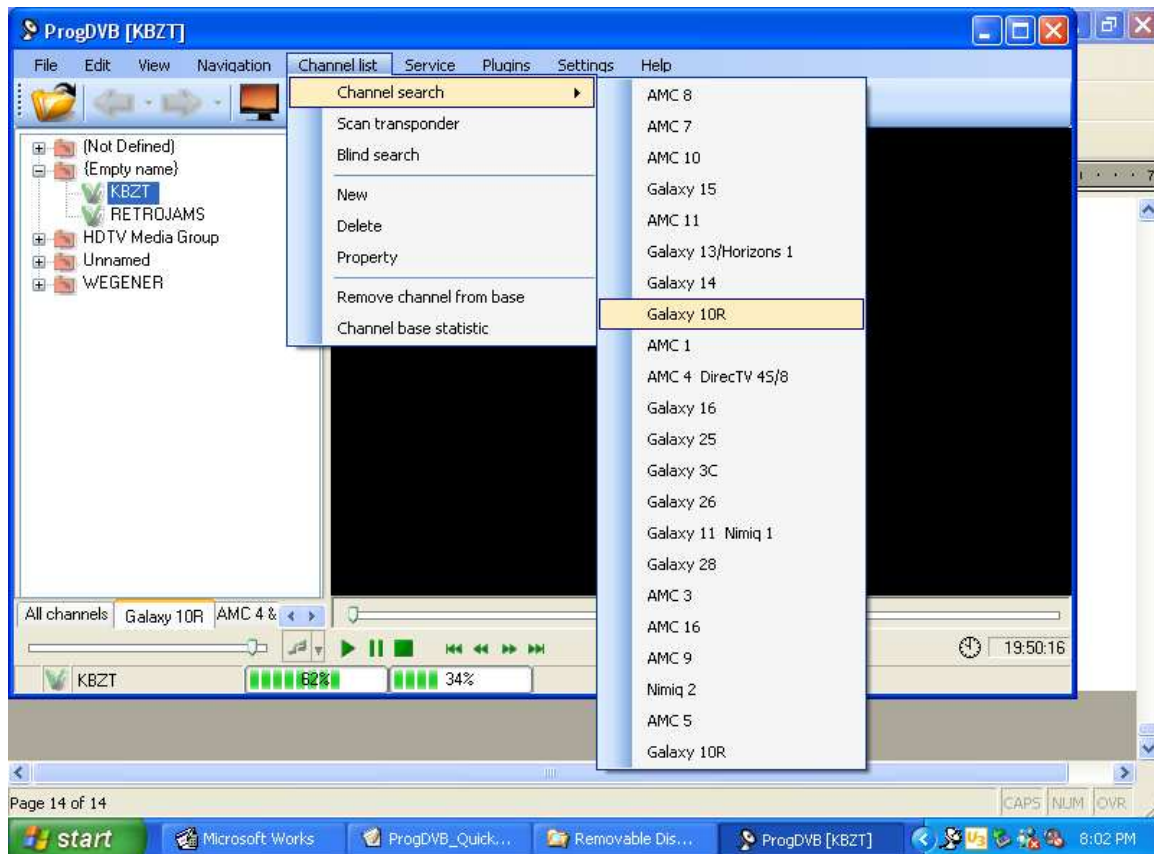
Click on Add LNB.



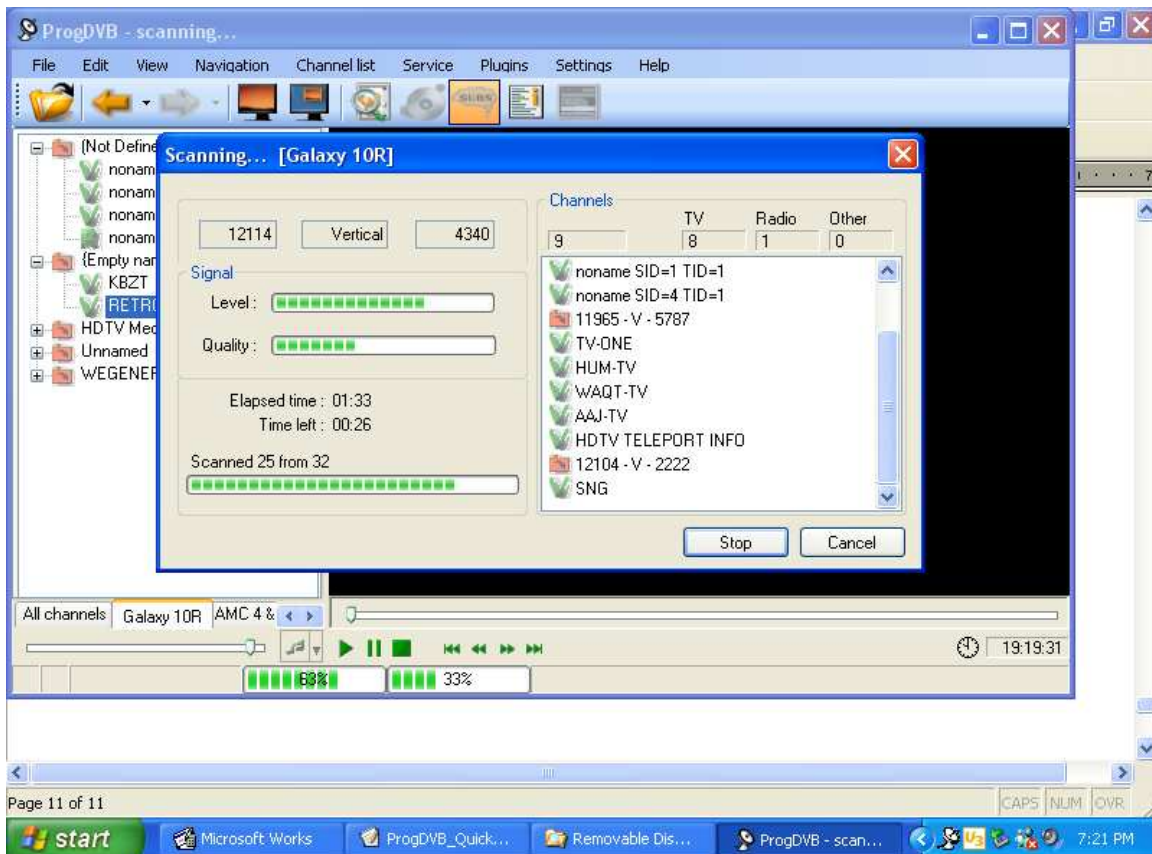
Click on List.



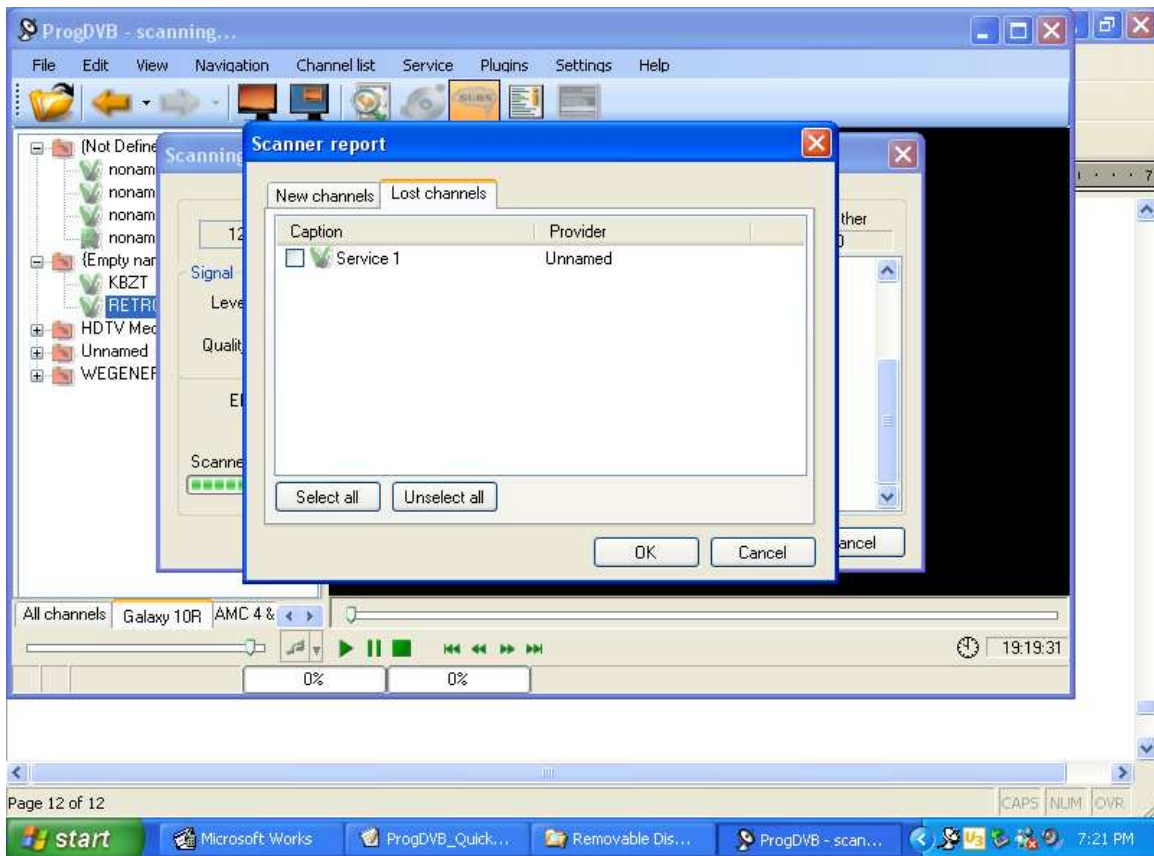
Select all of the satellites in your hemisphere that your dish can see. Click OK. www.lyngsat.com is a good source.



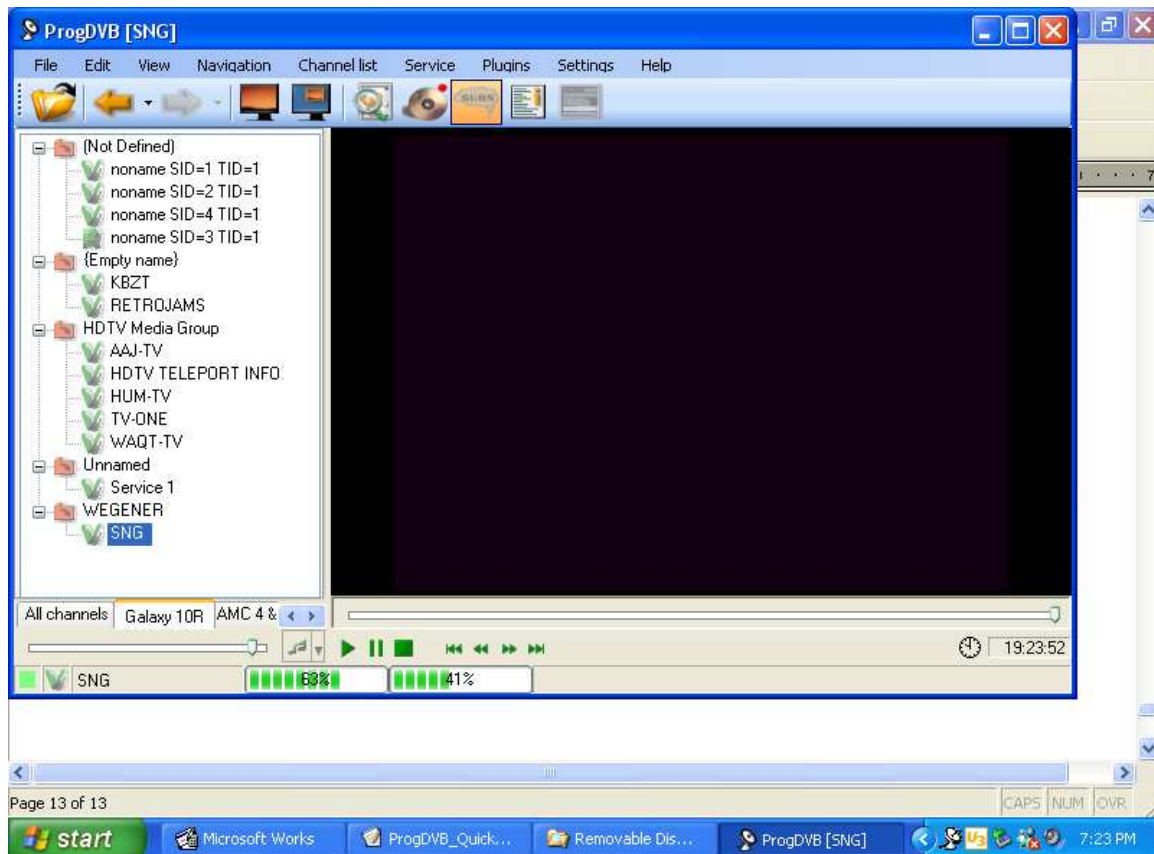
Select a satellite to scan.



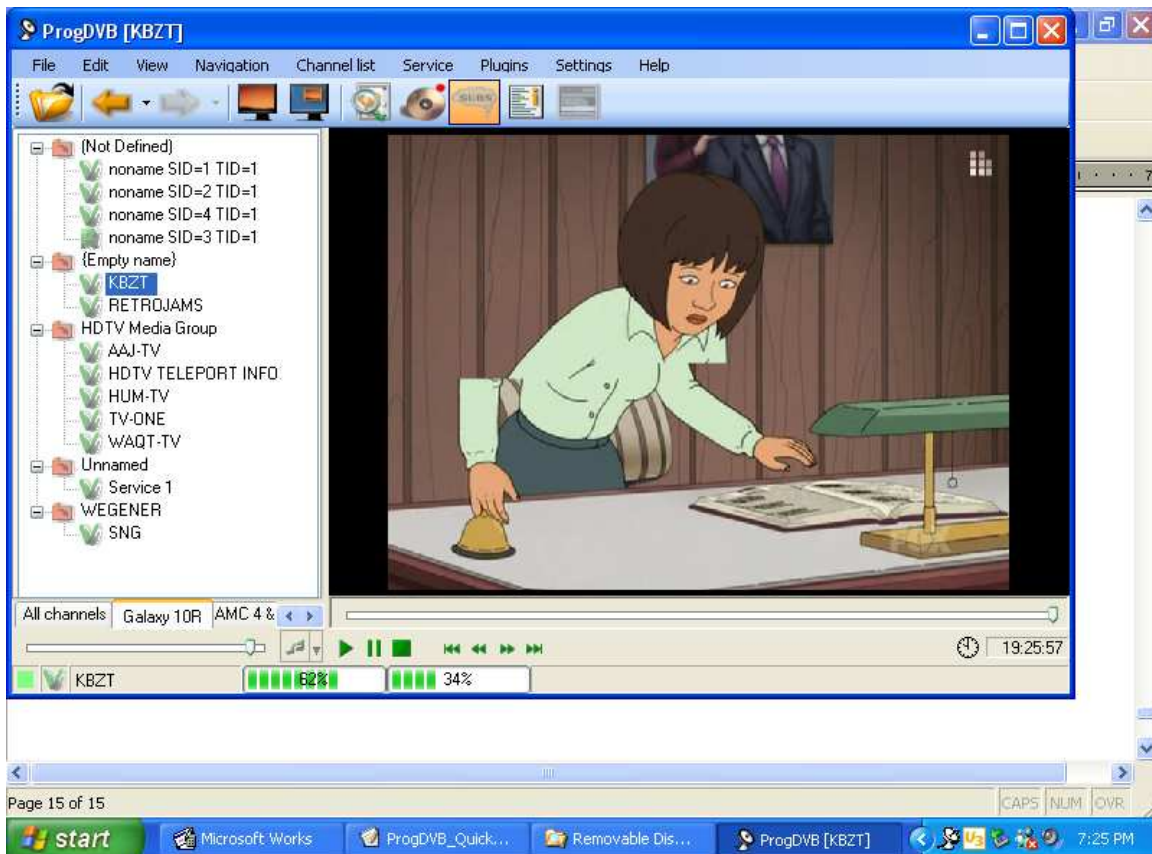
The scan will position the dish on the satellite and start the transponder scan automatically. This may take a few minutes and it may appear that nothing is happening at first.



When the scan is complete click OK.



Select any of the channels on the left side of the screen to view. Green V's are FTA free video. R's are free radio and disks are data downloads. Some Red V's are viewable.



To go to a full screen select that icon at the top tool bar. While in full screen you can cursor to the top of screen to pull down the tool bar or go to the left to pull in the channel list to change channels.